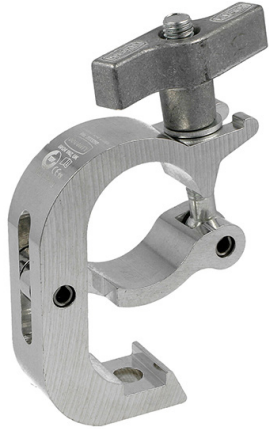




Product Data Sheet

Trigger Clamp



A Trigger Clamp with a slotted body to hold captive an M12 nut or bolt	
Part Nos	T58860 - Polished T588601 - Powder Painted Satin Black
Tube Diameter	Ø48 - 51mm (1.89" - 2.01")
Materials	Main Body - AW6082 T6 Aluminium Roll Pins - Stainless Steel Eyebolt Assy - Grade 8.8
Max Tightening Torque	Hand-tight Only
Fixings	To be used with M12 Fixings
WLL	200Kg
Weight	0.50Kg (1.10 lbs)
Factor of Safety	5:1
Approval	TÜV Approved

Dimensions in mm

