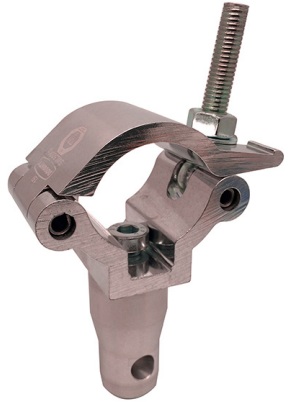




# Lightweight Clamp with Half Connector

## Product Data Sheet



A Lightweight Clamp fitted with a Half Connector to work with Modular Rigging components.	
<b>Part Nos</b>	T45815 - Polished T45816 - Powder Painted Satin Black
<b>Tube Diameter</b>	Ø48 - 51mm (1.89" - 2.01")
<b>Materials</b>	Main Body - AW6082 T6 Aluminium Roll Pins - Stainless Steel Eyebolt Assy - Grade 8.8
<b>Max Tightening Torque</b>	30Nm
<b>Fixings</b>	Aluminium Half Connector
<b>WLL</b>	100Kg Vertical Load
<b>Weight</b>	0.49Kg (1.08 lbs)
<b>Factor of Safety</b>	5:1

Dimensions in mm

